



Aortoiliac Occlusive Disease

Aortoiliac Occlusive Disease

By: Dr. Raghuveer Vallabhaneni

Aortoiliac occlusive disease is the blockage of the aorta, the main blood vessel in your body, or the iliac arteries. The iliac arteries are the branches that your aorta divides into around the level of the belly button to provide blood to your legs and the organs in your pelvis. This blockage is typically caused by a buildup of plaque within the walls of your blood vessels.

The aorta and iliac arteries are the second most common blood vessels to be affected by peripheral arterial disease (PAD) after the blood vessels in the thigh. PAD occurs in 12-20% of people over the age of 65.

Find a vascular specialist near you

The information contained on Vascular.org is not intended, and should not be relied upon, as a substitute for medical advice or treatment. It is very important that individuals with specific medical problems or questions consult with their doctor or other health care professional.

Symptoms

May be absent

You may have varied symptoms or no symptoms at all and still have aortoiliac occlusive disease.

Fatigue, pain, or cramping when walking

Aortoiliac Occlusive Disease

Published on Society for Vascular Surgery (<https://vascular.org>)

When felt in the buttocks, thighs or calves, these symptoms may signal mild to moderate aortoiliac occlusive disease. As the disease progresses, these symptoms may occur after walking very short distances.

Erectile Dysfunction

Men may experience erectile dysfunction.

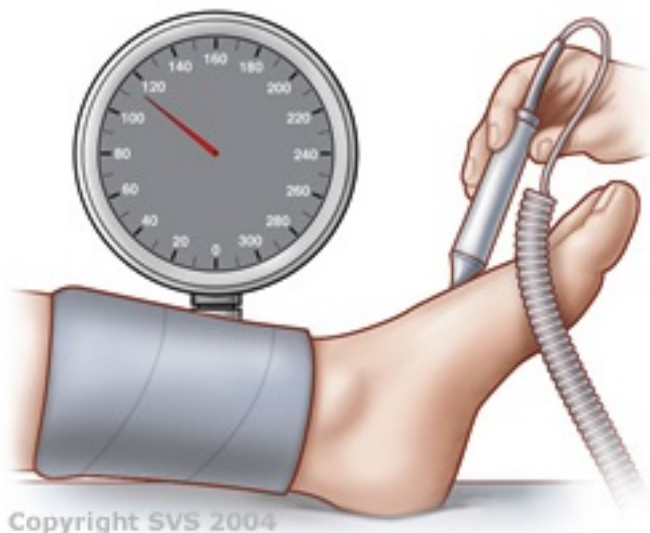
Pain at rest, leg and feet problems

In severe cases, you may feel pain in your feet or toes at rest, coldness and numbness in your legs, sores or wounds on your legs and feet, and even gangrene or the death of tissue in your feet.

Causes

- The most common cause of aortoiliac disease is atherosclerosis (hardening of the arteries). Hardening of the arteries may be caused by smoking, high cholesterol, high blood pressure, genetic predisposition or obesity.
- Inflammatory conditions such as Takayasu's arteritis may cause inflammation in the arteries causing blockages of the arteries.
- Radiation to the pelvis may cause progressive inflammation in the arterial wall leading to blockages of the arteries.

abiheader.jpg



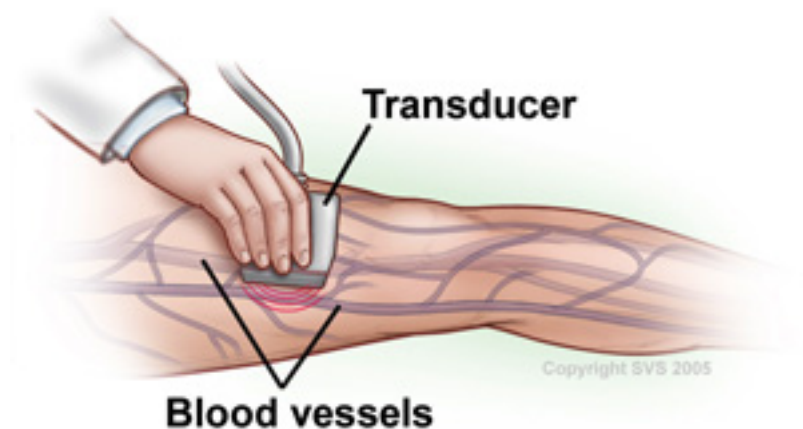
Diagnosis

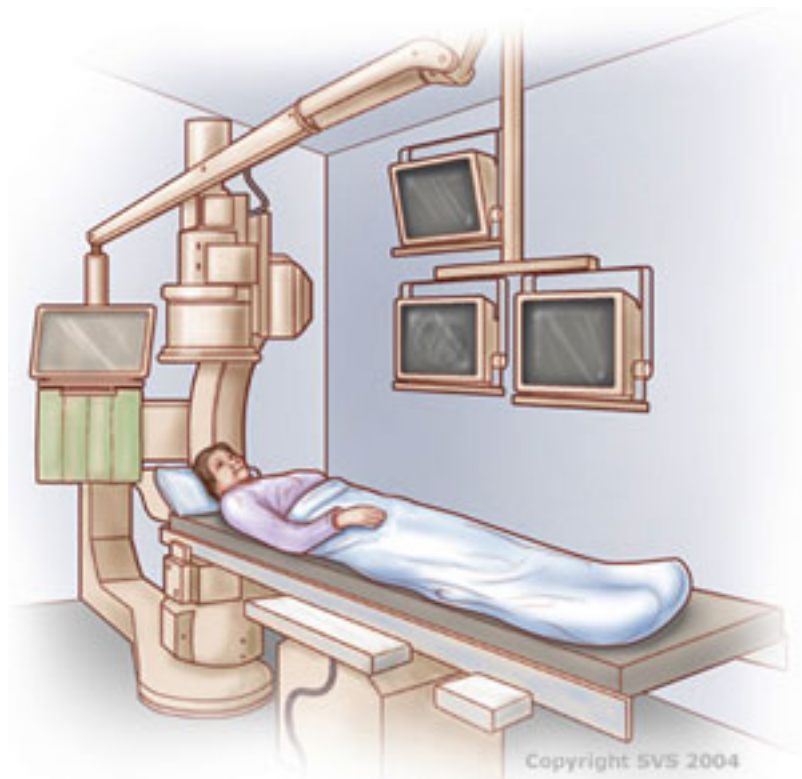
See a vascular surgeon

You will be asked questions about symptoms and medical history, including questions about family members. The vascular surgeon will also perform a physical exam.

Tests may be recommended

- Initially an ankle-brachial index test and a duplex ultrasound may be recommended.
- If further testing is needed a CT angiogram, MR angiogram, or a catheter-directed angiogram are options. These studies use different types of dye to help identify where blockages in the arteries are located to plan further treatment. With a CT angiogram and MR angiogram, dye is delivered through an IV. With a catheter-directed angiogram, dye is injected through a thin tube (catheter) inserted in an artery.





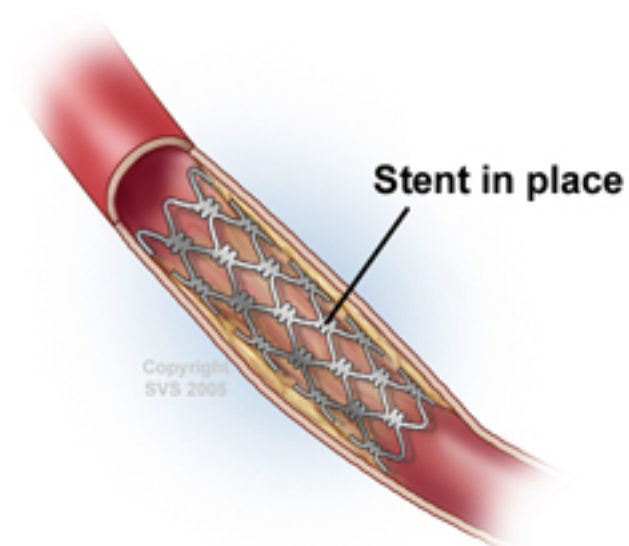
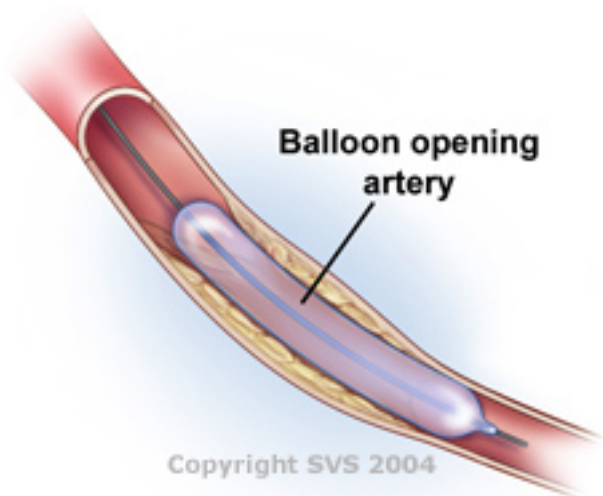
Treatments

Aortoiliac occlusive disease may be managed by:

- Risk factor modification, such as quitting smoking, controlling cholesterol or high blood pressure, managing diabetes and regular exercise.
- Medication may be prescribed, such as an aspirin or another medication to prevent platelets from clotting in the blood. A statin drug may help control cholesterol and also help prevent plaque progression.

If further treatment is needed, a minimally invasive procedure or a surgical bypass may be considered.

- The most common minimally invasive treatment is the placement of a stent in your aorta or iliac arteries. This procedure is commonly done at the same time as a catheter-directed angiogram test. The stent is a small device that compacts the plaque against the walls of the arteries to create a wider path for blood flow to the lower half of your body. An angioplasty, in which an inflatable balloon device is inserted through the catheter to further assist in opening up the arteries, can be added to the treatment.



- A surgical bypass is the creation of a detour around the blockage. The detour may start in the aorta (near your heart) and may end either in the iliac arteries in your pelvis, or in an artery in your groin. A bypass may be performed either on one or both sides at the same time. For severe disease that includes the aorta and both iliac arteries, a bypass typically runs from the aorta to the groin arteries, usually using an artificial graft. If there is not a suitable artery to originate the bypass in the aorta, or if you are not healthy enough to undergo an aortic-based procedure, the bypass generally starts at the axillary artery underneath the collarbone and ends in one or both legs.

Staying Healthy

- The best way to prevent development of aortoiliac occlusive disease is to not smoke, and manage cholesterol, blood pressure and diabetes.
- If you do smoke, ask your vascular surgeon to help you find a smoking cessation program that will work for you.
- Get regular exercise.
- Eat a healthy, well-balanced diet that is low in fat and cholesterol.

Resources

Surgical Bypass

Atherosclerosis

Find a vascular specialist near you